

# The Healing Power of Nature

An exhibition of paintings by Yvonne Saville and others

artsdepot, Finchley 15 - 20 July 2026

[www.artsdepot.co.uk](http://www.artsdepot.co.uk)



This exhibition has been planned and organised by local artist Yvonne Saville, in support of and in conjunction with North London Hospice. Yvonne is an accomplished painter who trained under the renowned landscape and seascape artist Bryan A. Thatcher. With a career spanning more than 35 years, she has held previous exhibitions and sold numerous works, each shaped by a lifetime of observation and resilience.

Born in 1944, and raised in Whitehaven, Cumbria, Yvonne grew up immersed in one of England's most dramatic and evocative landscapes. Throughout the many challenges she has faced in life, painting has remained a constant presence: a refuge, a language and a means of understanding the world.

Following the recent loss of her speaking voice due to motor neurone disease, Yvonne's art has taken on an even deeper significance. Where words have fallen silent, painting has become her new voice and source of great strength.

Nature lies at the heart of Yvonne's work. In it, she finds a powerful spiritual truth, that endings are never final and that renewal is always possible. Again and again, the natural world shows us how decay gives way to rebirth, offering solace, hope and calm in times of loss.

The nature theme is continued in the second part of the exhibition, where you can see paintings kindly donated by other local artists and art lovers.

**All proceeds from the exhibition will support the work of North London Hospice.**



1.  
Sunflowers 1 (wood)  
79 x 26  
£300



2.  
Buttercups 1  
67 x 23  
£400



3.  
Buttercups 2  
64 x 64  
£400



4.  
Sunflowers (large)  
136 x 74  
£500



5.  
Sunflowers 2  
46 x 34  
£150



6.  
Sunflowers 3  
46 x 34  
£150



7.  
Magnolia  
50 x 60  
£300



8.  
Bassenthwaite  
82 x 62  
£300



9.  
Perfectly Imperfect  
82 x 66  
£400



10.  
Bluebells  
120 x 40  
£450



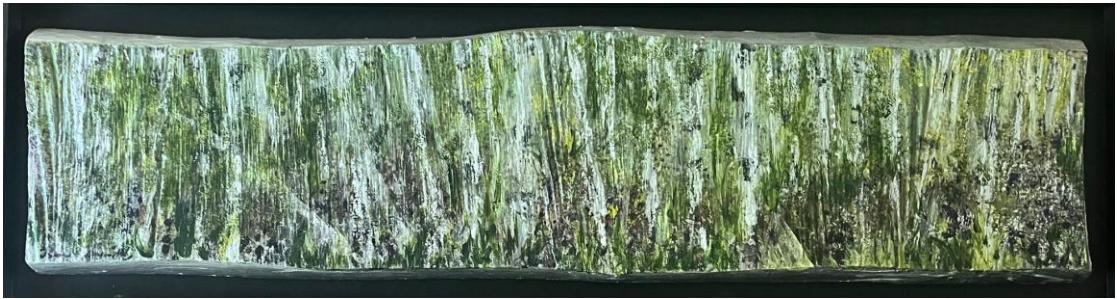
11.  
Wind on Moors  
110 x 86  
£450



12.  
Silver Birch 1 (wood)  
80 x 31  
£350



13.  
Silver Birch 2 (wax)  
103 x 66  
Not For Sale



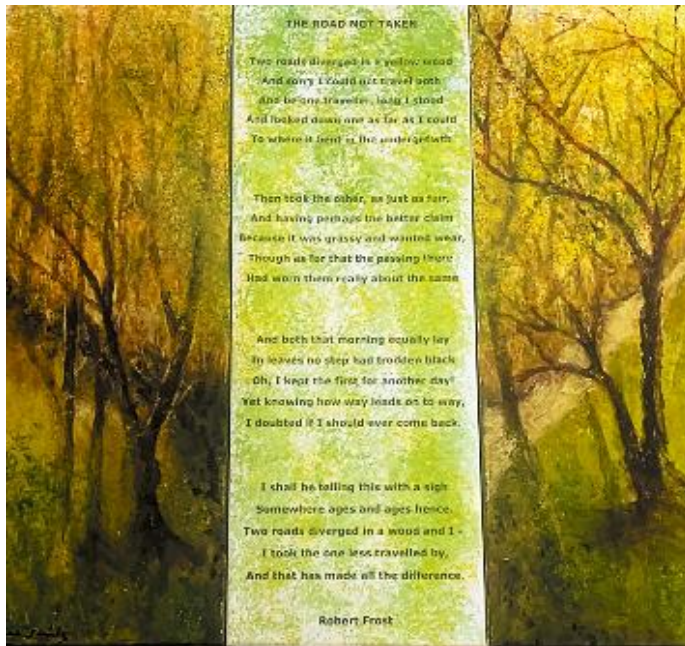
14.  
Silver Birch 3  
79 x 28  
£400



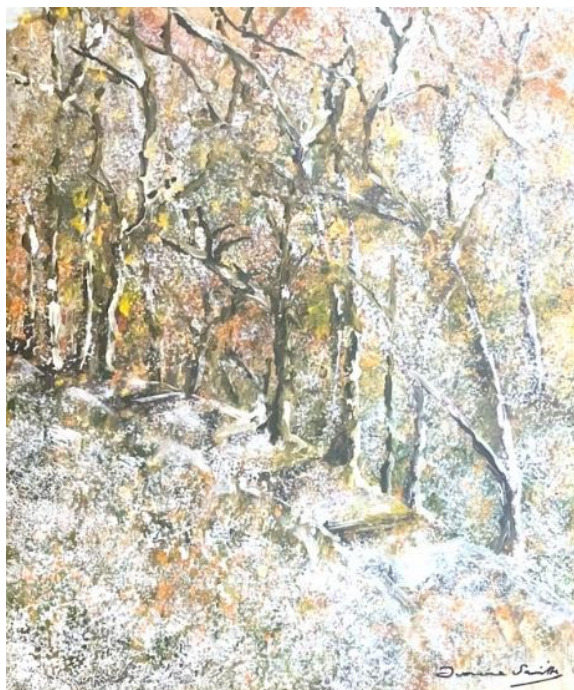
15.  
Wood on wood  
169 x 39  
£500



16.  
 No such thing as death  
 120 x 52  
 Not For Sale



17.  
 The Road not Taken  
 112 x 80  
 £400



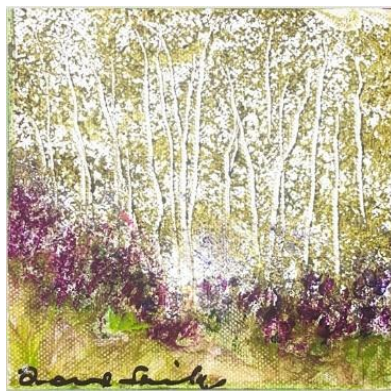
18.  
 Darlands in Winter  
 53 x 63  
 £400



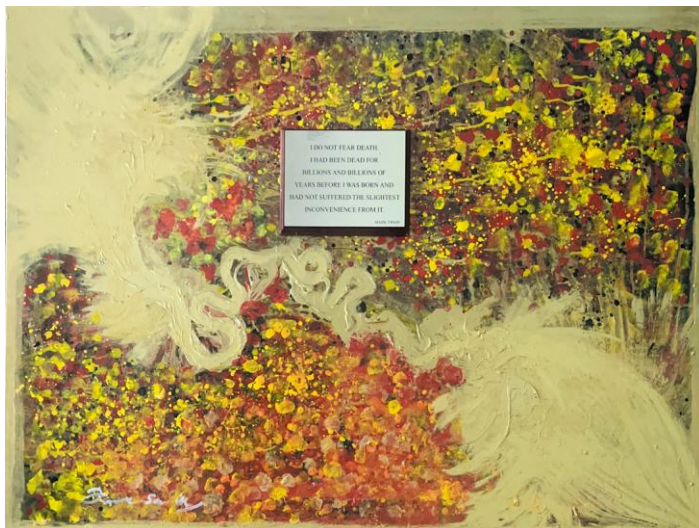
19.  
Darlands  
86 x 36  
£400



20.  
Wood (Tryptic)  
102 x 32  
£400



21.  
Darlands in Winter (small)  
15 x 15  
£200



22.  
Going back to where we came from  
122 x 91  
Not For Sale

## About North London Hospice

Built over 40 years ago by our community, North London Hospice's commitment to providing quality, free palliative and end-of-life care has remained in place ever since. They are dedicated to helping all their patients live life to the full.

To find out more about North London Hospice, please visit: <https://northlondonhospice.org>

**All proceeds from this exhibition will support the work of North London Hospice.**

If you would like to **purchase** a painting, you can do so through the box office on the ground floor near the main entrance. Collection or delivery at the end of the exhibition can also be arranged through the box office.

If you do not wish to purchase a painting, but would still like to **donate** to the hospice, please contact the fundraising team directly, on **020 8446 2288** quoting the following reference: 'Art Exhib'

Any paintings not sold during the exhibition will be available via a link on the North London Hospice website:  
<https://northlondonhospice.org/events/the-healing-power-of-nature-art-exhibition>

**Thank you for visiting today.**



### North London Hospice

47 Woodside Avenue,  
London,  
N12 8TT

**Charity No. 285300**

**Telephone (fundraising): 020 8446 2288**

**Email: [fundraising@northlondonhospice.co.uk](mailto:fundraising@northlondonhospice.co.uk)**